



[www.paradisegroup.co.in](http://www.paradisegroup.co.in)



# ZRICKS

CONCEPTS



Architecture  
Planners

Interior Design  
Vastu. Feng.

Landscaping, Exhibition  
Research Designs

BIM Consultancy  
EIR, E-proposal

Legal & Finance  
Project to Start-Up

Head Office: Bldg No. 1, Sector 11-1, Kharghar (West Mumbai),  
Corporate Office: 1201, Sansa Plaza, Bldg No. 10 & 11, Sector - 10B, Vashi, Near Mumbai - 400 207,  
Tel.: +91 9920 0000 | Email: [info@paradisegroup.co.in](mailto:info@paradisegroup.co.in)



All the specifications, design, facilities, drawings, etc. are subject to the approval of the respective authorities & tenders and shall be changed if necessary. The management will be responsible for providing all the facilities. We provide work in our professional manner and ethics, i.e. irrespective of an ethics, imagination and trust not to be misinterpreted in any way.



[www.Zricks.com](http://www.Zricks.com)

Grandeur of  
its own kind.  
And a life,  
that evolves  
around it.



*Life's luxury is in imagining all the comforts you desire.  
When each moment is as grand as your next benchmark.  
A space where lifestyle regales you with its refined glory.  
An experience that surpasses all expectations.*

Presenting



Welcome to the Life that is Ultra-Luxurious.

An ultra-luxurious lifestyle  
that symbolises the rare class



[www.Zricks.com](http://www.Zricks.com)



# Arrive at a new benchmark of luxury living.

2, 3, 4 BHK Ultra-Luxury Homes, G+27 Storied 5 Towers

- Double-height designer main entrance lobby
- Air-conditioned lounge with art gallery
- Designer floor lobby on every floor landing
- High speed lifts
- On call concierge
- 24 x 7 Generator backup for lift and common areas
- Stanchion lift in each tower
- Intercom system
- Modern fire extinguishing system



Central Park, Kharghar



Kharghar Station



D.Y. Patil Stadium, Navi



Metro Rail



Usha Chowk, Kharghar - Night View



Shilp Chowk, Kharghar - Night View



Upcoming International Airport, Navi Mumbai



BRCON Temple



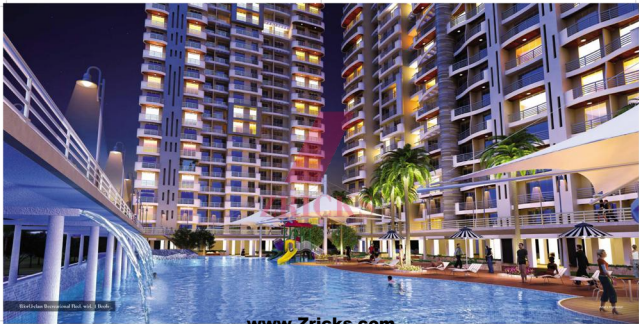
Kharghar Valley Golf Course

# Kharghar

## Location Advantages

- Proposed Pan City of approx. Rs. 8700 crores, (Approved by Govt.) styled like Disneyland and Singapore's Sentosa Park
- 217 acres of Central Park (Designed like London's Hyde Park and New York's Central Park)
- Metro Rail
- BRCON Temple
- TATA Cancer Hospital
- Entertainment centres like 'Usha Chowk' and 'Shilp Chowk'
- Reputed educational institutes
- Golf Course
- 5 kms. (approx.) from the proposed International Airport and D.Y. Patil Stadium
- Connected with the Mumbai-Pune Highway
- Market areas and other conveniences like Malls, Multiplexes, Kharghar Railway Station, etc. at a short distance
- The Morbe Dam undertaking of Navi Mumbai Municipal Corporation ensures 24 hours water supply throughout Kharghar
- Having purchased 101 Mega Watt electric power, now, Kharghar complements with uninterruptible 24 hours electricity, exempting it from the regular power-cuts
- Proposed 14 track road connecting Sion-Panvel will soon enable commuters to reach Kharghar within 20 minutes from Sion.



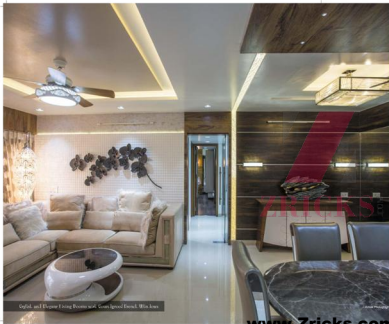


Elite Ocean Residences Pool, with 3 Floors

[www.Zricks.com](http://www.Zricks.com)



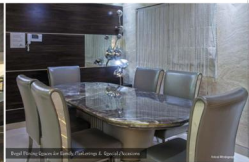




Regal and Elegant Living Room with Contemporary Detail, With Area

www.zricks.com

[www.Zricks.com](http://www.Zricks.com)



Regal Dining Space for Family, Parties & Special Occasions

www.zricks.com



Designer Modular Kitchen with Granite Flooring & Back

www.zricks.com



# The ultra-modern podium lifestyle for recreation & wellness

## Landscape & Beauty

- Landscaped garden with acupressure pathways
- Rock fountains with waterfall
- Feng Shui/ Vastu
- Zodiac & herbal gardens
- Well-designed, calming water bodies
- Dancing fountain with color LED lights
- Regenerating eucalyptus plantation

## Peace & Devotion

- Sai Baba temple with meditation lawn
- Flag hoisting & social gathering area
- Senior citizen sit-outs
- Arena pool
- Bhakti sangit & pranachan courtyard

## Lifestyle Recreations

- Amphitheatre
- Cafeteria
- Swimming pool, infinity pool & lap pool
- Elevated jogging track (daywalk)
- Kids pool with water slides
- Children's & toddler's park with rubber court

## Outdoor Sports zone

- Basketball court
- Volleyball court
- Net cricket practice
- Free play area for cricket, football etc.



Planned Car Garage Below and Ample Vehicle Parking Space



24/7 Green Play area and Pool



24/7 Lounge, Bar and Club



Swimming Pool with Bridge & Canopies



Swimming Pool



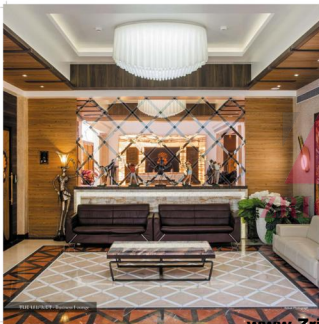
Courtyard

# CLUB OASIS

20,000 Sq.Ft. Lavish Club Life



[www.Zricks.com](http://www.Zricks.com)



PHOTOGRAPHY: Business Energy

# The ultra-chic clublife with World of facilities

## Health & Recreation

- 100sqm Fitness Gymnasium with personal trainer
- 100sqm Fitness Club room with personal trainer
- Personal maintenance with spa & bar concept
- 3 Jacuzzis with temperature control system
- 100sqm Fitness Line Fitness Hall
- 24 supervised spa

## All in One's Facilities

- 25.000sqm's parking cover with 2nd. floor expansion
- Gaming room & 5m x 10m in play area
- 10.000sqm game parkour
- Drawing & painting room (fully equipped)
- 100sqm Fitness from rubber system for fitness and fun
- Music room with 100sqm floor for dance training

## Fun & Entertainment

- 100sqm Fitness Club room with music & an HD video imaging
- 100sqm Fitness Entertainment Hall for parties & gatherings
- 1 Outdoor system swimming pool with temperature control system in club house

## In house Sports & more

- 100sqm Fitness Club room & smaller room
- 100sqm Fitness Club room
- 100sqm Fitness Club room & fitness court
- 2 100sqm Fitness Club room courts
- 100sqm Fitness Club room & golf course
- Shooting club



11800000 - Gym & Aerobics Equipment



1000000 - Spa & Wellness



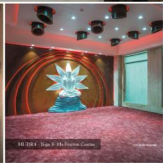
Spa & Wellness



11800000 - Banquet Hall & Conference



1000000 - Spa & Wellness



1000000 - Spa & Wellness



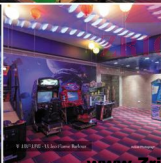
10 1000 SQ FT - 10 Pool Tables & Bar Area



11 1000 SQ FT - 10 Pool Tables & Bar Area



12 1000 SQ FT - 10 Pool Tables



13 1000 SQ FT - 10 Pool Tables



14 1000 SQ FT - 10 Pool Tables



## Sai Mannat, at a glance...

### Tower Facilities

- Double-height designer main entrance lobby
- Air-conditioned lounge with art gallery
- Designer floor lobby on every floor landing
- Highspeed lifts
- On call concierge
- 24 x 7 Generator backup for lift and common area
- Stretcher lift in each tower
- In-tower system

### Apartment Facilities:

#### Luxury

- B.A.K Dubai marbleite flooring or equivalent
- European wooden flooring in master bedroom
- Plank spacious bedrooms
- UPVC soundproof french windows

#### Convenience

- Designer kitchen with branded steel sink, Chimney & hob
- Water purifier & geyser in kitchen
- Geyser in all bathrooms
- Beautiful mix of varnished varnished tiles, glass tiles and agglomerate Italian-styled marble in all bathrooms
- Mirror partition in all bathrooms for dry & wet area

### Beauty

- Glass and automated shower panel in master bathroom
- Private Spanish sun-deck
- Designer bathroom with branded sanitary ware & fixtures
- Imported marble counter top with wash basin and front mirror
- Premium quality velvet paints on interior walls
- Designer wall paper on one wall of every room

### Safety

- Solidwood intricately carved doors
- Anti-rick tiles on attached terraces & balconies
- 3 tier security system
- Modern fire extinguishing system

### Podium lifestyle Features

#### Landscape & Beauty

- Landscaped garden with acacia-pattern pathways
- Rock fountains with waterfall
- Tropical Garden
- Zebra & herbal gardens
- Well-designed, calming water bodies
- Dancing fountains with color LED lights
- Regenerating ecologically plantation

### Peace & Devotion

- Sai Baba temple with meditation lawn
- Flag hoisting & social gathering area
- Senior citizens sit-outs
- Aroma pool
- Wheel-ramp & provision courtyard

### Lifestyle Recreations

- Amphitheatre
- Cafeteria
- Swimming pool, infinity pool & lap pool
- Elevated jogging track (turfwalk)
- Kids pool with water slides
- Children's & toddler's park with rubber court

### Outdoor Sports zone

- Basketball court
- Volleyball court
- Six cricket pitches
- Five play area for cricket, football etc.

### Club life Features:

#### Health & Recreation

- Air-conditioned gymnasium with personal trainer
- Air-conditioned aerobic centre with personal trainer
- Personal waterciser with salad bar concept
- 2 Jacuzzis with temperature control systems

- Air-conditioned meditation hall
- Therapeutic spa

### Fun & Entertainment

- Air-conditioned main theatre with more than 50 sitting capacity
- Air-conditioned Community hall for parties & get-together
- Additional covered swimming pool with temperature control system in club-house

### Children's Activities

- Children's activity centre with fish aquarium
- Gaming zone & fun library in play area
- Video game parlour
- Drawing & painting room (fully equipped)
- Air-conditioned two-nation rooms for their studies
- Music room with dance floor for dance training

### Indoor Sports Arena

- Air-conditioned billiards & snooker room
- Air-conditioned card room
- Air-conditioned indoor badminton court
- 2 Air-conditioned squash courts
- Air-conditioned simulated golf course
- Shooting rink



# Level Plan



Upper Ground Floor Plan

First Floor Plan (Podium)



Building on 4 Levels (Lower 3, 1 Upper Floor + Elevator)

## Recreation Floor - Podium (1<sup>st</sup> Floor)



- 01 Open golfing
- 02 Ho-lidays room
- 03 Casino & golfing
- 04 Jacuzzi
- 05 Badminton
- 06 Swimming pool in
- 07 Fencing
- 08 Fitness & jogging track
- 09 Swimming pool
- 10 Water slide

- 11 Billiard pool
- 12 Beach
- 13 Fun lounge & bar
- 14 Fishing scenes (In a lake & ground)
- 15 Multi-purpose play area
- 16 Tug-of-war
- 17 Tug-of-war
- 18 Electronic gaming area

- 19 In-line skating
- 20 CS-3 team's play area
- 21 Casino cricket's corner
- 22 Soft-foam temple
- 23 Dining & view pool
- 24 Tug-of-war
- 25 Sun-bath
- 26 Badminton
- 27 Badminton
- 28 Badminton
- 29 Shooting play area
- 30 Business lounge
- 31 Barbecue room
- 32 Drawing & music learning room
- 33 Ski area
- 34 Cafeteria
- 35 Men's toilet
- 36 Reception office
- 37 Air-conditioned club (2 + 1)

# Wing "A"

Typical Floor Plan (Even)



{ 1st, 3rd, 5th, 7th, 9th, 11th, 13th, 15th, 17th, 19th, 21st, 23rd, 25th Floor }

Typical Floor Plan (Odd)



{ 1st, 3rd, 5th, 7th, 9th, 11th, 13th, 15th, 17th, 19th, 21st, 23rd, 25th Floor }



## Wing "B" & "D"



Typical Floor Plan (Even)



{ 1st, 3rd, 5th, 7th, 9th, 11th, 13th, 15th, 17th, 19th, 21st, 23rd, 25th Floor }

Typical Floor Plan (Odd)



{ 1st, 3rd, 5th, 7th, 9th, 11th, 13th, 15th, 17th, 19th, 21st, 23rd, 25th Floor }



# Wing "C"



Typical Floor Plan (Even)



( B110 )

( 101, 102, 104, 106, 108, 110, 112, 114, 116, 118, 120, 122, 124, 126, 128, 130, 132, 134, 136, 138, 140, 142, 144, 146, 148, 150, 152, 154, 156, 158, 160, 162, 164, 166, 168, 170, 172, 174, 176, 178, 180, 182, 184, 186, 188, 190, 192, 194, 196, 198, 200, 202, 204, 206, 208, 210, 212, 214, 216, 218, 220, 222, 224, 226, 228, 230, 232, 234, 236, 238, 240, 242, 244, 246, 248, 250, 252, 254, 256, 258, 260, 262, 264, 266, 268, 270, 272, 274, 276, 278, 280, 282, 284, 286, 288, 290, 292, 294, 296, 298, 300, 302, 304, 306, 308, 310, 312, 314, 316, 318, 320, 322, 324, 326, 328, 330, 332, 334, 336, 338, 340, 342, 344, 346, 348, 350, 352, 354, 356, 358, 360, 362, 364, 366, 368, 370, 372, 374, 376, 378, 380, 382, 384, 386, 388, 390, 392, 394, 396, 398, 400, 402, 404, 406, 408, 410, 412, 414, 416, 418, 420, 422, 424, 426, 428, 430, 432, 434, 436, 438, 440, 442, 444, 446, 448, 450, 452, 454, 456, 458, 460, 462, 464, 466, 468, 470, 472, 474, 476, 478, 480, 482, 484, 486, 488, 490, 492, 494, 496, 498, 500, 502, 504, 506, 508, 510, 512, 514, 516, 518, 520, 522, 524, 526, 528, 530, 532, 534, 536, 538, 540, 542, 544, 546, 548, 550, 552, 554, 556, 558, 560, 562, 564, 566, 568, 570, 572, 574, 576, 578, 580, 582, 584, 586, 588, 590, 592, 594, 596, 598, 600, 602, 604, 606, 608, 610, 612, 614, 616, 618, 620, 622, 624, 626, 628, 630, 632, 634, 636, 638, 640, 642, 644, 646, 648, 650, 652, 654, 656, 658, 660, 662, 664, 666, 668, 670, 672, 674, 676, 678, 680, 682, 684, 686, 688, 690, 692, 694, 696, 698, 700, 702, 704, 706, 708, 710, 712, 714, 716, 718, 720, 722, 724, 726, 728, 730, 732, 734, 736, 738, 740, 742, 744, 746, 748, 750, 752, 754, 756, 758, 760, 762, 764, 766, 768, 770, 772, 774, 776, 778, 780, 782, 784, 786, 788, 790, 792, 794, 796, 798, 800, 802, 804, 806, 808, 810, 812, 814, 816, 818, 820, 822, 824, 826, 828, 830, 832, 834, 836, 838, 840, 842, 844, 846, 848, 850, 852, 854, 856, 858, 860, 862, 864, 866, 868, 870, 872, 874, 876, 878, 880, 882, 884, 886, 888, 890, 892, 894, 896, 898, 900, 902, 904, 906, 908, 910, 912, 914, 916, 918, 920, 922, 924, 926, 928, 930, 932, 934, 936, 938, 940, 942, 944, 946, 948, 950, 952, 954, 956, 958, 960, 962, 964, 966, 968, 970, 972, 974, 976, 978, 980, 982, 984, 986, 988, 990, 992, 994, 996, 998, 1000 )



Typical Floor Plan (Odd)



( B111 )

( 101, 102, 104, 106, 108, 110, 112, 114, 116, 118, 120, 122, 124, 126, 128, 130, 132, 134, 136, 138, 140, 142, 144, 146, 148, 150, 152, 154, 156, 158, 160, 162, 164, 166, 168, 170, 172, 174, 176, 178, 180, 182, 184, 186, 188, 190, 192, 194, 196, 198, 200, 202, 204, 206, 208, 210, 212, 214, 216, 218, 220, 222, 224, 226, 228, 230, 232, 234, 236, 238, 240, 242, 244, 246, 248, 250, 252, 254, 256, 258, 260, 262, 264, 266, 268, 270, 272, 274, 276, 278, 280, 282, 284, 286, 288, 290, 292, 294, 296, 298, 300, 302, 304, 306, 308, 310, 312, 314, 316, 318, 320, 322, 324, 326, 328, 330, 332, 334, 336, 338, 340, 342, 344, 346, 348, 350, 352, 354, 356, 358, 360, 362, 364, 366, 368, 370, 372, 374, 376, 378, 380, 382, 384, 386, 388, 390, 392, 394, 396, 398, 400, 402, 404, 406, 408, 410, 412, 414, 416, 418, 420, 422, 424, 426, 428, 430, 432, 434, 436, 438, 440, 442, 444, 446, 448, 450, 452, 454, 456, 458, 460, 462, 464, 466, 468, 470, 472, 474, 476, 478, 480, 482, 484, 486, 488, 490, 492, 494, 496, 498, 500, 502, 504, 506, 508, 510, 512, 514, 516, 518, 520, 522, 524, 526, 528, 530, 532, 534, 536, 538, 540, 542, 544, 546, 548, 550, 552, 554, 556, 558, 560, 562, 564, 566, 568, 570, 572, 574, 576, 578, 580, 582, 584, 586, 588, 590, 592, 594, 596, 598, 600, 602, 604, 606, 608, 610, 612, 614, 616, 618, 620, 622, 624, 626, 628, 630, 632, 634, 636, 638, 640, 642, 644, 646, 648, 650, 652, 654, 656, 658, 660, 662, 664, 666, 668, 670, 672, 674, 676, 678, 680, 682, 684, 686, 688, 690, 692, 694, 696, 698, 700, 702, 704, 706, 708, 710, 712, 714, 716, 718, 720, 722, 724, 726, 728, 730, 732, 734, 736, 738, 740, 742, 744, 746, 748, 750, 752, 754, 756, 758, 760, 762, 764, 766, 768, 770, 772, 774, 776, 778, 780, 782, 784, 786, 788, 790, 792, 794, 796, 798, 800, 802, 804, 806, 808, 810, 812, 814, 816, 818, 820, 822, 824, 826, 828, 830, 832, 834, 836, 838, 840, 842, 844, 846, 848, 850, 852, 854, 856, 858, 860, 862, 864, 866, 868, 870, 872, 874, 876, 878, 880, 882, 884, 886, 888, 890, 892, 894, 896, 898, 900, 902, 904, 906, 908, 910, 912, 914, 916, 918, 920, 922, 924, 926, 928, 930, 932, 934, 936, 938, 940, 942, 944, 946, 948, 950, 952, 954, 956, 958, 960, 962, 964, 966, 968, 970, 972, 974, 976, 978, 980, 982, 984, 986, 988, 990, 992, 994, 996, 998, 1000 )



# Wing "E"

Typical Floor Plan (Even)



{ 16, 18, 20, 22, 24, 26, 28, 30, 32, 34, 36, 38, 40, 42, 44, 46, 48, 50, 52, 54, 56, 58, 60, 62 }

Typical Floor Plan (Odd)



{ 1, 3, 5, 7, 9, 11, 13, 15, 17, 19, 21, 23, 25, 27, 29, 31, 33, 35, 37, 39, 41, 43, 45, 47, 49, 51, 53, 55, 57, 59, 61 }



## PARADISE MEDIA -

DEBECCHIE BARE, DEBECCHIOLE BORENHE,  
DEBECCHIELE DEBEBE.

It's been a long yet fruitful journey for Paradise Group. We began more than two decades ago with a vision one of providing a smart and appealing space for all to dwell. We have come a long way after constructing more than 100 successful projects across the World as of today's date. This milestone of more than 10 years has made us a team of highly experienced construction experts. Evolving almost with the latest technology and implementation of world-class techniques are the reasons why our structures are not just functionally designed marvels, but also a perfect epitome of 'heavy with quality'.

With structures that are a healthier mix of high-end finishes and modern amenities and gear an elegant touch of culture, we have managed to make this world a better place to live in. Our goal has been glorious and works us proud in constructing 3.2 million sq. ft. of land area that gave our customers their glimpse to the so advanced life. It proved us as developing near 11.2 million sq. ft. of land area across great locations of four Member and Member like Singapore, Russia, Tokyo, China, Venezuela, Belgium, Gibraltar, Bambaal and 17 awards granting Eighty innovative, state-of-the-art construction for the places as well as the masses. With an extremely progressive attitude, today we are bringing about towards a bright future with a massive land bank of another 11.2 million sq. ft. of land area through which we are committed to bring in a big change in present housing concepts. We are sure that our sincere efforts towards making this world a 'Paradise' will definitely become the pleasant reality in the near future.



### COMPLETED PROJECTS

1000010 - Cal Cypriote, Cal Maraca, Cal Coltrane, Cal Cycling, Cal Jewel , Cal Marlin  
100000 - Cal Barona, Cal Harmony, Cal Paganini, Cal Panga

### ONGOING PROJECTS

1000010 - Cal Maraca, Cal West Range, Cal Monte  
100000 - Cal Barona  
100000 - Cal East  
100000 - Cal West City  
1000010 - Cal World Bank

### UPCOMING PROJECTS

1000010 - Cal Landmark , Cal Jungling, Cal Inn  
100000 - Cal World Celebrity  
1000000 - Cal East